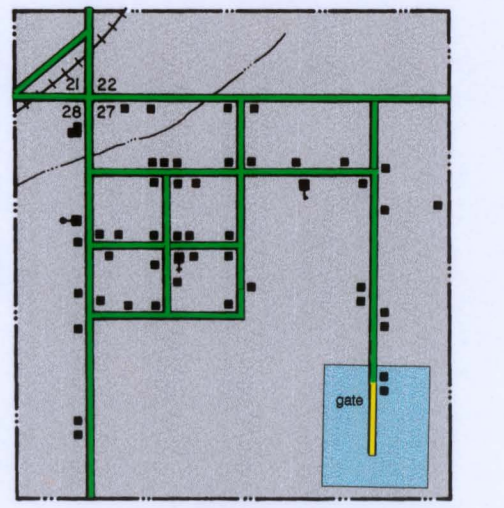
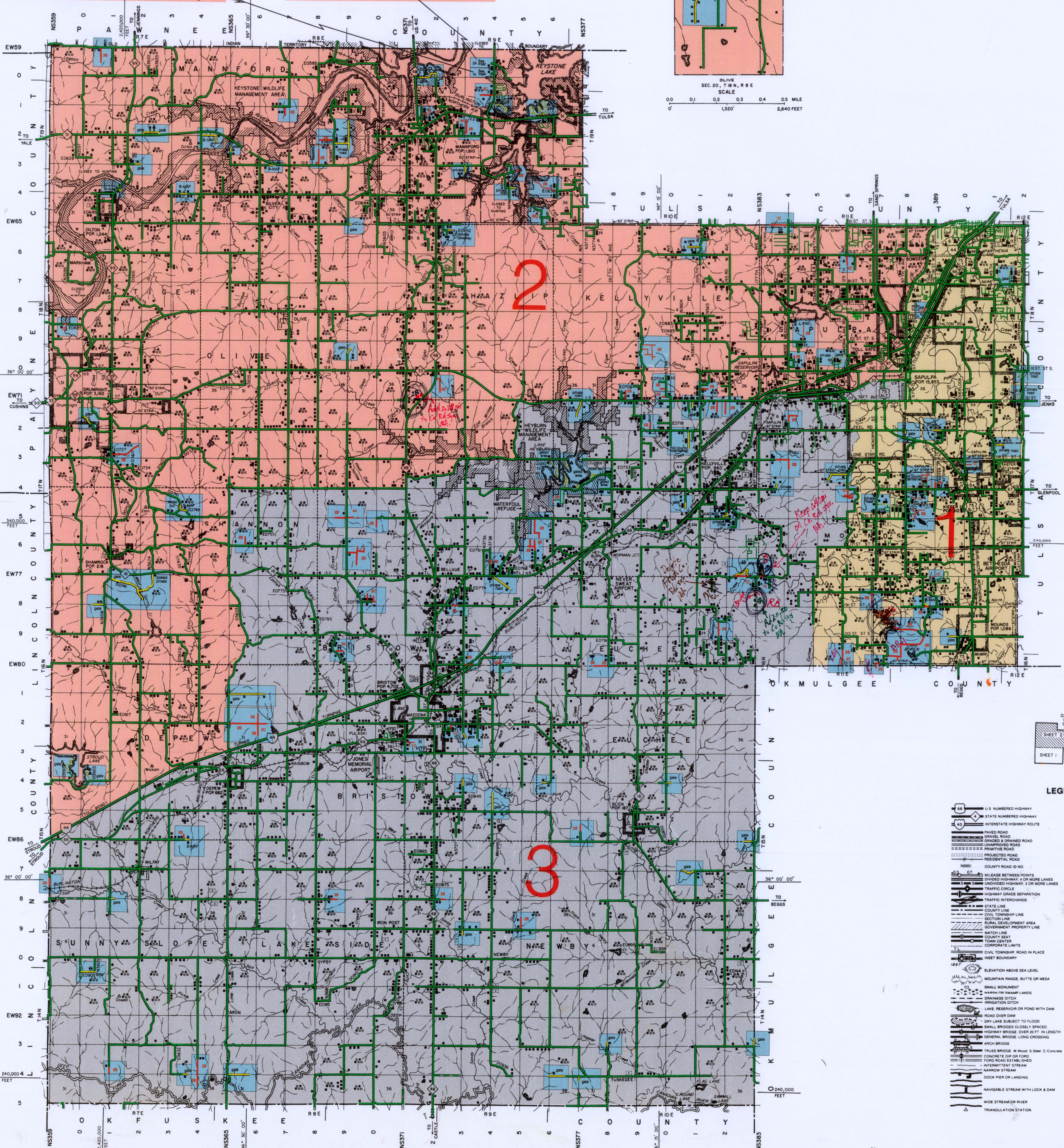


OLIVE
SEC. 20, T. 18 N., R. 8 E.
SCALE
0.0 0.1 0.2 0.3 0.4 0.5 MILE
0' 1,320' 2,640' FEET



MILFAY
SEC. 27, T. 10 N., R. 7 E.
SCALE
0.0 0.1 0.2 0.3 0.4 0.5 MILE
0' 1,320' 2,640' FEET

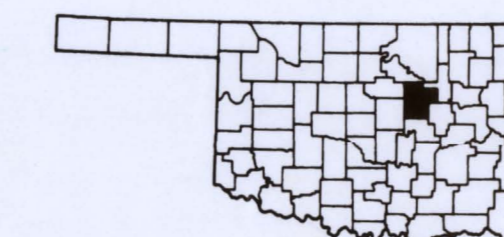
LEGEND

	U.S. NUMBERED HIGHWAY		RAILROAD ANY NUMBER OF TRACKS
	STATE NUMBERED HIGHWAY		GRADE CROSSING
	INTERSTATE HIGHWAY ROUTE		OVERPASS R.R. ABOVE
	PAVED ROAD		OVERPASS R.R. BELOW
	GRADED & DRAINED ROAD		RAILROAD ON STREET
	UNIMPROVED ROAD		MILITARY AIRFIELD
	PRIMITIVE ROAD		AIRPORT WITH COMPLETE FACILITIES
	PROJECTED ROAD		AIRPORT WITH LIMITED FACILITIES
	RESIDENTIAL ROAD		LANDING STRIP - PRIVATE FIELD
	COUNTY ROAD ID NO.		OBSERVATION OR LOOKOUT TOWER
	MILEAGE BETWEEN POINTS		CAMP SITE
	UNDIVIDED HIGHWAY, 3 OR MORE LANES		FISH HATCHERY
	DIVIDED HIGHWAY, 3 OR MORE LANES		GOLF COURSE OR COUNTRY CLUB
	HIGHWAY GRADE SEPARATION		ATHLETIC FIELD OR AMUSEMENT PARK
	TRAFFIC INTERCHANGE		FAIRGROUNDS RACE COURSE
	STATE LINE		DWELLING
	CIVIL TOWNSHIP LINE		SEASONAL DWELLING
	SECTION LINE		CHURCH OR OTHER RELIGIOUS BUILDING
	GOVERNMENT PROPERTY LINE		CEMETERY
	MATCH LINE		REST HOME
	COUNTY SEAT		HOSPITAL
	TOWN CENTER		SMALL BUSINESS
	CORPORATE LIMITS		INDUSTRY
	CIVIL TOWNSHIP ROAD IN PLACE		SAW MILL
	STREET BOUNDARY		MINES SHAFT OR DRIFT
	ELEVATION ABOVE SEA LEVEL		OIL OR GAS FIELD
	MOUNTAIN RANGE, BUTTE OR MESA		GAUGING OR FLAMING STATION
	WARM OR SWAMP LANDS		WAREHOUSE
	DRAINAGE DITCH		QUARRY
	IRRIGATION DITCH		SCHOOL
	LAKE RESERVOIR OR POND WITH DAM		COMMUNITY HALL OR LODGE
	ROAD OVER DAM		DRIVE-IN THEATER
	DRY LAKE SUBJECT TO FLOOD		CORRECTIONAL INSTITUTION
	SMALL BRIDGES CLOSELY SPACED		HIGHWAY GARAGE
	HIGHWAY BRIDGE OVER 20 FT IN LENGTH		JUNK YARDS & DUMPS, AUTOMOBILES, BUSES, BUILDING MATERIAL, ETC.
	GENERAL BRIDGE LONG CROSSING		FERTILIZER, F.F., C.DUMP
	ARCH BRIDGE		WATER SUPPLY STAND PIPE
	TRUSS BRIDGE W/ WOOD S-SHED C-CONCRETE		SEWERAGE SYSTEM
	CONCRETE DIKE OR FORD		POWER SUBSTATION
	FORD ROAD ESTABLISHED		BOOSTER STATION
	NARROW STREAM		TELEPHONE OR RADIO STATION
	DOCK PIER OR LANDING		MILITARY INSTALLATION
	NAVIGABLE STREAM WITH LOCK & DAM		
	WIDE STREAM OR RIVER		
	TRIANGULATION STATION		

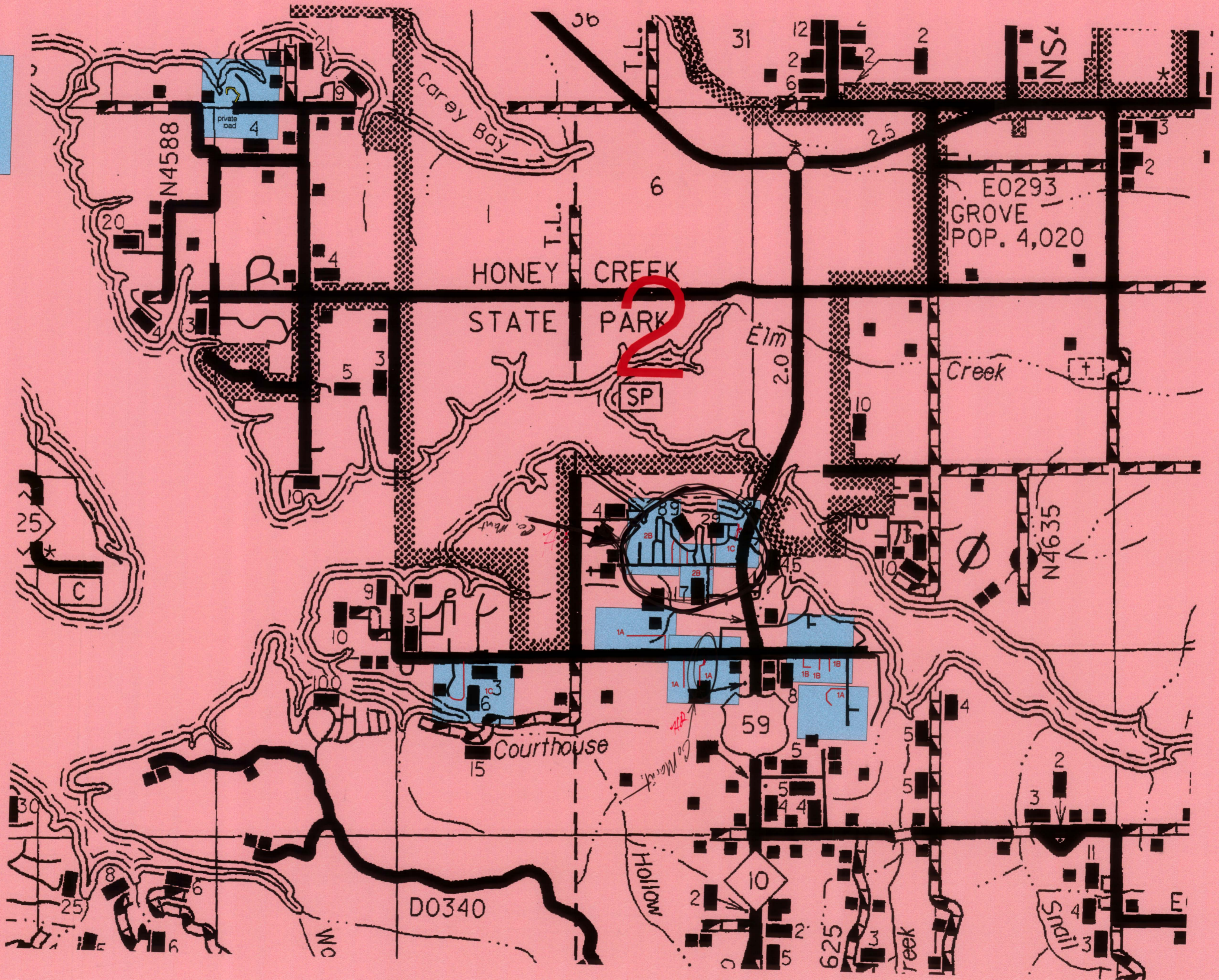
8-5-02
W. J. Stoddy
AUG 2 2002

GENERAL HIGHWAY MAP CREEK COUNTY OKLAHOMA

PREPARED BY THE
OKLAHOMA DEPARTMENT OF TRANSPORTATION



5

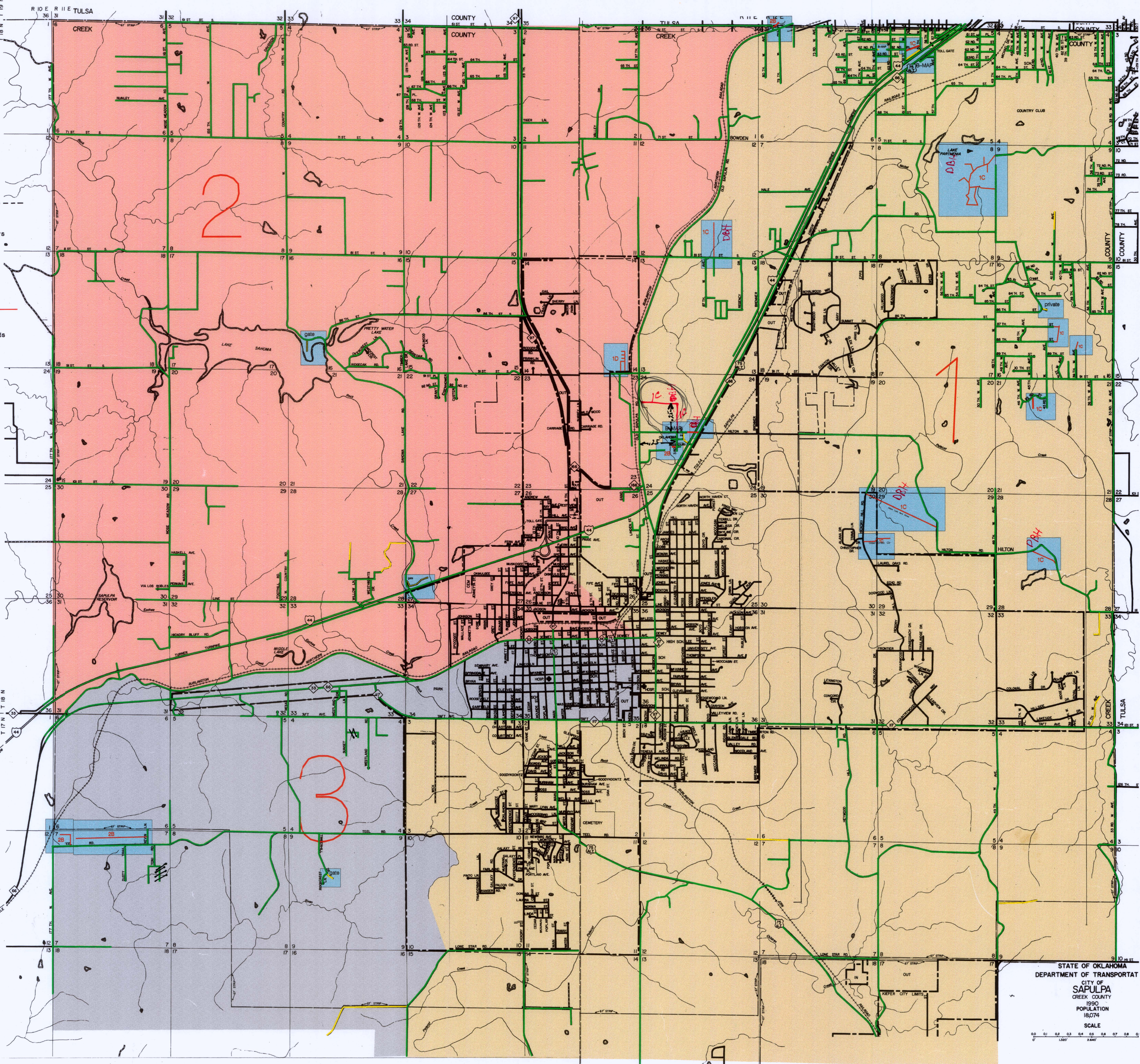


Copies of this map are available for public use at nominal cost.
OKLAHOMA DEPARTMENT OF TRANSPORTATION
REPRODUCTION BRANCH (Phone - 521-5889)
200 N. E. 21st STREET
OKLAHOMA CITY, OKLA. 73106

AUG 02 2002

Sapulpa City Limits

New Roads



STATE OF OKLAHOMA
DEPARTMENT OF TRANSPORTATION
CITY OF
SAPULPA
CREEK COUNTY
1990
POPULATION
18,074
SCALE
0 0.1 0.2 0.3 0.4 0.5 0.6 0.7 0.8 0.9 1.0
0 100 200 300 400 500 600 700 800 900 1000

SAPULPA, CREEK