

CIRCUIT ENGINEERING DISTRICT #1 SPECIAL BOARD MEETING

DATE: August 19, 2009
TIME: **(ACCO District Board will meet at 9:30 am)**
10:00 am
PLACE: Mayes County Fairgrounds
Pryor, OK

AGENDA ITEMS

1. Call to Order by President
2. Roll Call by Secretary
3. Introductions
4. Acknowledge receipt of incoming correspondence
5. Reading of the minutes of the Special Board Meeting held on July 14, 2009, and approval or modification thereof.
6. Treasurer's Report
7. Discussion and possible action on 2010 budget.
8. Discussion and possible action to approve projects on the following programs:
 - a. Emergency Transportation Revolving Fund (ETR) (Attachment 8a)
 - b. Bridge Replacement (BR) (Attachment 8b)
 - c. Surface Transportation Program (STP) (Attachment 8c)
 - d. Material Request Program (MRP) (Attachment 8d)
Delaware County requests their project be moved up due to seasonal work.
 - e. County Improvements to Roads & Bridges (CIRB) (Attachment 8e)
 - f. American Recovery and Restoration Act (ARRA) (Attachment 8f)
 - g. TIGER Discretionary Grants (Attachment 8g)
9. Discussion and possible action on ETR policy and procedures.
10. Discussion and possible action on creating standard bidding documents.
11. Discussion and possible action to approve payment of Commissioner Earls' travel expenses.
12. Force Account & Locally Funded Projects - Share your success stories and cost saving ideas.
Linda Herndon would like to share a success story of a project nearing completion in her district. The Prairie Song Road (Durham Road) project is being constructed with the help of the Cherokee Nation, Rogers County District 2 and Washington County Districts 1 and 3.
13. Update on OCCEDB and ACCO events.

14. Legislative report.
15. ODOT Local Government report.
16. Discussion and possible action on "Resolution to Join and Approve an Interlocal Cooperative Agreement with CED#1". This resolution should be executed and returned to the CED Program Manager before June 30, 2009.
Creek County's District Attorney will not sign the resolution; all other counties are in.
17. Review calendar of events (Attachment 17).
18. Links to Creek, Delaware, Rogers, Tulsa and Washington counties have been added to the CED website, www.ced1.org; are there other counties that have websites?
19. Set date for the next CED meeting.
20. Discussion and possible action on setting dates for future training topics.
 - Gabion Baskets
 - Environmental – NEPA clearance
 - Funding Sources
 - Industrial/Lake Access
 - Sampling (Scott Wright)
 - INCOG
 - Educate our Legislators
 - LTAP – road maintenance topics
21. Adjourn

OCT Equipment is sponsoring lunch!

CIRCUIT ENGINEERING DISTRICT #1 SPECIAL BOARD MEETING MINUTES

DATE: July 14, 2009
 TIME: 4:00 pm
 PLACE: Biltmore Hotel
 401 South Meridian Avenue, Room 202
 Oklahoma City, OK

1. Call to order by President (Deckard)
2. Roll call by Secretary (Hilton)

COUNTY	APPOINTED REP.	PRESENT	ABSENT
CRAIG	Roy Bible	X	
CREEK	Roger Boomer	X	
DELAWARE	Dave Kendrick (Ken Crowder)	X	
MAYES	Alva Martin	X	
NOWATA	Tim Kilpatrick	X	
OSAGE	Scott Hilton	X	
OTTAWA	Russell Earls	X	
PAWNEE	Dale Vance		X
ROGERS	Mike Helm	X	
TULSA	Ray Jordan		X
WASHINGTON	Gary Deckard	X	

3. Introductions
4. Acknowledge receipt of incoming correspondence
None
5. Reading of the minutes of the Special Board Meeting held on June 11, 2009, and approval or modification thereof.
Russell Earls made a motion to accept the minutes; Alva Martin seconded. Motion carried.
6. Treasurer's Report
The current balance is \$235,183.63 (before issuing materials request check).

7. Discussion and possible action of audit.
Russell Earls made a motion to take the documents directly to auditor; Tim Kilpatrick seconded. Mike Helm requested a roll-call vote. Aye: Craig, Creek, Delaware, Mayes, Nowata, Osage, Ottawa, Washington. Nay: Rogers. Motion carried.
8. Discussion and possible action to approve projects on the following programs:
 - a. Emergency Transportation Revolving Fund (ETR) (Attachment 8a)
A programming resolution and "before" pictures must be submitted with applications and "after" pictures with repayment documents)
No action taken.
 - b. Bridge Replacement (BR) (Attachment 8b)
No action taken.
 - c. Surface Transportation Program (STP)
No action taken.
 - d. Material Request Program (MRP) (Attachment 8d)
Check number 10043 for \$50,000 was issued to Ottawa County as approved in previous meeting.
 - e. County Improvements to Roads & Bridges (CIRB) (Attachment 8e)
Most recent list will be posted on website for review.
 - f. American Recovery and Restoration Act (ARRA) (Attachment 8f)
No action taken.
 - g. TIGER Discretionary Grants (Attachment 8g)
Info on potential projects will be posted on website. All counties are encouraged to get info to Blick as soon as possible. Projects will be reviewed and selected for submission at next meeting.
9. Review calendar of events (Attachment 9).
10. ODOT Local Government report.
11. Set date for the next CED meeting.
The next meeting will be August 19 at 10:00 am at the Mayes County Fairgrounds.
12. Discussion and possible action on renewal of program management contract for 2009-2010.
Russell Earls made a motion to renew contract as presented by committee; Mike Helm seconded. Motion carried.
13. Adjournment

CED#1

EMERGENCY AND TRANSPORTATION (ETR) REVOLVING FUND PROGRAM

August 19, 2009

Project ID	County	District	Project Name	Bridge or Roadway	Beginning Lat/Long	Ending Lat/Long	JP#	Force Account Agreement	Estimated Cost	Funds Requested	Reimbursement Source	Approved by CED	Xmtd to OCCEDB	Start Date	Anticipated Reimbursement Date	Funds Received	Funds Repaid	Beginning Balance: \$3,571,428	Before Pics	After Pics
1	Mayes	2	428 Rd	NBI 27204	Lat: 36°08'06" Long: 95°23'12"				\$ 500,000	\$ 500,000	BR & CBRI	1/29/2009	1/29/2009		Jan 10	Y	5/26/2009 \$500,000	\$3,571,428	N/A	N/A
2	Osage	1	Old Hwy 99						\$ 369,950	\$ 369,950		1/29/2009	1/29/2009			Y		\$3,201,478	Casey took before pics; Bob	
3	Osage	2	103rd St N						\$ 235,000	\$ 235,000	250C	1/29/2009	1/29/2009		Jul 09	Y		\$2,966,478	pull BR inspection photo	
4	Osage	3	Prue Road						\$ 275,000	\$ 275,000	CBRI	1/29/2009	1/29/2009		90 days after completion	Y		\$2,691,478	6-3: Pat will get pics to me	
5	Washington	2	W1800 Rd						\$ 342,000	\$ 200,000	Cherokees/County	3/24/2009	3/24/2009		12 months after receipt	Y		\$2,491,478	6-3: Linda will get pics to me	
6	Delaware	1	660 Rd						\$ 100,000	\$ 100,000	CBRI	5/14/2009	5/14/2009		Nov 09			\$2,391,478	6-3: emailed Ken	
7	Pawnee	2	NS339 EW43-44						\$ 50,000	\$ 50,000	CBRI	5/14/2009	5/14/2009		Upon completion			\$2,341,478	6-3: emailed Kandy	
8	CED#2		ETRCR-2-11-1(01)09 ETRCR-2-11-1(02)09 ETRCR-2-11-2(03)09						\$ 56,232	\$ 56,232		5/14/2009	RR?		3 weeks		yes, per Amanda \$ 56,232	\$2,341,478		
9	Pawnee	2	Old NBI 05263	Road NS 35300	Lat: 36°25'48" Long: 96°42'36"				\$ 116,000	\$ 116,000	FEMA							\$2,225,478		
10	Osage	2	W Tina Trail (Whispering Hills)		Lat: 36°13'06"N Long: 96°12'27"W	Lat: 36°13'43"N Long: 96°14'00"W		yes	\$ 180,000	\$ 180,000	CBRI				November 2009			\$2,045,478	yes	
																		\$2,045,478		

TOTAL FUNDED TO DATE: \$ 2,082,182

TOTAL REPAID TO DATE: \$556,232

8a

ACCO DISTRICT #1

FY 2010 FEDERAL BRIDGE REPLACEMENT FUNDS

23-Jun-09

DISTRICT #1 ALLOCATION:

\$2,903,230.00

COUNTY ALLOCATIONS:

COUNTY	BR ALLOCATION	CONVERT TO STP	UNDERRUNS OVERRUNS*	BR BALANCE
CRAIG	\$253,212.20		\$0.00	\$253,212.20
CREEK	\$337,966.60		\$0.00	\$337,966.60
DELAWARE	\$181,945.60		\$0.00	\$181,945.60
MAYES	\$184,236.60		\$0.00	\$184,236.60
NOWATA	\$204,750.00		\$0.00	\$204,750.00
OSAGE	\$346,073.40		\$0.00	\$346,073.40
OTTAWA	\$222,567.80		\$0.00	\$222,567.80
PAWNEE	\$224,563.40		\$0.00	\$224,563.40
ROGERS	\$190,924.40		\$0.00	\$190,924.40
TULSA	\$362,856.60		\$0.00	\$362,856.60
WASHINGTON	\$394,133.40		\$0.00	\$394,133.40
TOTAL:	\$2,903,230.00	\$0.00	\$0.00	\$2,903,230.00

**Project numbers listed on separate page (over/unders).
** BR allocation reserved for Extraordinary Bridge.*

SUMMARY OF APPROVED EXPENDITURES:

COUNTY	FUNDING LEVEL	PROJECT NO.	J/P NO.	LET DATE	AUTHORIZED (Date)	FEDERAL FUNDS
DISTRICT OVERRUNS FROM 2009						
TOTAL:						\$0.00

FUNDS AVAILABLE AFTER EXPENDITURES:

\$2,903,230.00

PROJECTS READY FOR FUNDING:

COUNTY	# BRIDGE	PROJECT NO.	J/P NO.	TOTAL COST	% Fed. Funds	FEDERAL FUNDS
TOTAL:						\$0.00

BALANCE REMAINING

\$2,903,230.00

86

CED#1 ARRA & BR FUNDING

J/P	COUNTY	ACTUAL				
		LOW BID	ARRA	BR	CBRI	CBRI
21644	Mayes	\$ 992,147.23	\$ 980,000.00	\$ 59,058.43	\$ 12,147.23	\$ 12,147.23
22754	Mayes	\$ 318,171.28	\$ 290,000.00	\$ 17,805.93	\$ 10,365.35	\$ 10,365.35
20159	Mayes	\$ 334,486.06	\$ -	\$ 268,588.84	\$ 65,897.22	\$ 65,897.22
22055	Pawnee	\$ 314,211.21	\$ -	\$ 266,278.00	\$ 66,570.00	\$ 66,570.00
25031	Tulsa	\$ 1,251,759.85	\$ 900,000.00	\$ 74,786.21	\$ 351,759.85	\$ 351,759.85
22211	Washington	\$ 646,330.74	\$ 636,000.00	\$ 37,779.84	\$ 10,330.74	\$ 10,330.74
23550	Washington	\$ 491,208.01	\$ 480,000.00	\$ 29,472.48	\$ 11,208.01	\$ 11,208.01
23553	Washington	\$ 267,481.13	\$ -	\$ 213,984.90	\$ 53,496.23	\$ 53,496.23
TOTALS		\$ 4,615,795.51	\$ 3,286,000.00	\$ 967,754.63		

\$ 1,102,791.20 Creek/Ottawa/Tulsa BR

\$ 2,070,545.83 Total Obligated

PROJECTED BALANCE \$ 3,286,000.00 \$ 2,535,008.00

LEFTOVER \$ (428,285.00) \$ (464,462.17) TO OSAGE/CANDY CREEK

86

**CED#1 Materials Request Program
(Funded thru CED Expense Budget)**

August 19, 2009

ID	Rank	County	District	Description of Project	Bridge			Roadway				Estimated Cost	Amount Requested from CED	Date Requested	Approved	Check #
					Number	Span Length	Width	Type	Number	Length	Width					
1	1	Mayes	3	Replace LWC w/ RCB	N/A	30'	26'	3 cell 10'x4' rcb	E506		20'		\$50,000	8/20/2008	10013	
2	2	Craig	1	Replace LWC w/ RCB	N/A	43.5'	26'	Triple RCB				\$66,000	\$50,000	8/20/2008	10014	
3	3	Delaware	18.3	Replace culverts w/ BR	N/A							\$150,000	\$50,000	8/20/2008	10015	
4	6	Nowata	3	Replace BR w/ RCB	NBI 03596; Local 51	33'1"	15'	concrete cast-in-place	E16 at N422	6 miles	22'	3"	\$49,325	\$49,325	8/20/2008	10016
5	9	Creek	1	Replace BR w/ RCB	NS389.75 EW73								\$50,000	8/20/2008	10017	
6	4	Ottawa	3	Replace LWC w/ RCB	159	80'	18'	Box	NS580	1 mile	26'	NA	\$125,000	\$50,000	1/29/2009	10032
7	3	Delaware	2	Overlay					E340 & E350	1 mile	20'	2"	\$61,855	\$50,000	3/24/2009	10037
8	4	Ottawa	1	Replace pipe w/RCB	new	33'	24'	RCB	MC 5650C	-	24'	-	\$70,000	\$50,000	3/13/09	10043
9	5	Pawnee	2	Repl. wood br w/RCBs	new (2 ea)	20'	24'	RCB					\$50,000	\$50,000	3/31/09	
10	3	Delaware	3	Overlay	N/A				CR660	0.6	20'	2"	\$50,000	\$50,000	4/1/09	
11	2	Craig	3	Oil and Chip Seal					MC 1866C	4 miles	24'	oil/chip seal	\$150,000	\$50,000	4/6/09	
12	1	Mayes	1	Oil and Chip Seal					N428 btw W360-W370	2 miles	24'	1"	\$70,000	\$50,000	4/27/09	
13	1	Mayes	2	Triple Seal and Chip					S 430 W 530-540	1 mile	24'	NA	\$50,000	\$50,000	5/2/09	
14	6	Nowata	3	2 retain walls & culvert					E13, N414	50'	30'	N/A	\$50,000	\$50,000	5/7/09	
2		Craig														
4		Ottawa														
5		Pawnee														
5		Pawnee														
6		Nowata														
7		Rogers														
7		Rogers														
7		Rogers														
8		Osage														
8		Osage														
8		Osage														
9		Creek														
9		Creek														
10		Washington														
10		Washington														
10		Washington														
11		Tulsa														
11		Tulsa														
11		Tulsa														
												Total amount funded to date: \$349,325				

These projects have not yet been funded.

18

CIRB PROJECTS FOR CED#1 (DIV8)

CIRB (HB1176) PROJECTS

ODOT DIV 8
CED #1

CHANGES INCORPORATED

APPROVED OCT 2007

REVISED 3-18-2008

REVISED 1-21-2009

FUNDING	FY2009	FY2010	FY2011	FY2012	FY2013	FY2014
BEGINNING YEAR BALANCE	\$2,027,642	\$62,195	-\$2,735,681	-\$4,945,568	-\$2,298,647	-\$2,087,801
FUNDS RECEIVED	\$7,139,530	\$10,573,466	\$10,600,000	\$10,600,000	\$10,600,000	\$10,600,000
OTHER FUNDS/TRIBAL/STP	\$0	\$0	\$0	\$1,000,000	\$0	\$0
ENGINEERING	\$498,962	\$686,622	\$117,800	\$0	\$0	\$0
PLANNED EXPENDITURES	\$8,606,015	\$12,682,720	\$12,694,107	\$8,953,259	\$10,388,954	\$0
ENDING YEAR BALANCE	\$62,195	-\$2,733,681	-\$4,945,568	-\$2,298,647	-\$2,087,801	-\$8,512,199

PRIO	COUNTY	JOB PIECE	PROJECTS	ENGINEER	EXPENSES	FY2009	FY2010	FY2011	FY2012	FY2013	FY2014
1	DELAWARE	20622	SPAVINAW CREEK	ROSE & MCCRARY	ROW & UTIL ARCHEOLOGICAL CONSTRUCT	\$150,000	\$1,522,900				
2	CRAIG	23419	BR#78 - PAMPAW CREEK	GUY ENGINEERING	ROW & UTIL CONSTRUCT	\$65,905	\$1,879,320				
3	WASHINGTON	15279	BR#139 - BUCK CREEK	PEREZ	ROW & UTIL CONSTRUCT	\$600,000					
4	OSAGE	23929	BR#246 - QUAPAW CREEK	GUY ENGINEERING	ROW & UTIL CONSTRUCT	\$98,943	\$1,413,315				
5	TULSA	19615	BIRD CREEK - 56TH ST N	TULSA COUNTY	ROW & UTIL CONSTRUCT	\$2,611,517					
6	MAYES	25416	BR#71 - PRYOR CREEK	WINGFIELD	ENGRG & ENV ROW & UTIL CONSTRUCT		\$21,494	\$823,138			MOVE TO 2013?
7	NOWATA	25423	CALIFORNIA CREEK LWC	GUY ENGINEERING	ENGRG & ENV ROW & UTIL CONSTRUCT		\$59,284	\$877,967			
8	CREEK	22350	W. 81ST ST. CORRIDOR	CRAIG & KEITHLINE	ROW & UTIL CONSTRUCT	\$315,000		\$1,701,975			
9	OSAGE	23480	BR#238 - BLACKBURN BRIDGE	GUY ENGINEERING	ROW & UTIL CONSTRUCT	\$109,200	\$7,511,025				
10	CRAIG	24860	BR#14 - BIG CREEK	GUY ENGINEERING	ROW & UTIL CONSTRUCT		\$54,516	\$1,077,260			
11	DELAWARE	24864	BR#15 - FLY CREEK	ROSE & MCCRARY	ENGRG & ENV ROW & UTIL CONSTRUCT		\$57,452	\$687,148			
12	OTTAWA	22896	BR#85 - CONNORS BRIDGE	GUY ENGINEERING	ENGRG & ENV ROW & UTIL CONSTRUCT	\$20,000 \$4,500,000					
13	TULSA	25487	DIP CREEK ROAD	TULSA COUNTY	ENGRG & ENV ROW & UTIL CONSTRUCT	\$137,550		\$1,970,005			
14	ROGERS	25479	BR#102 & 106 REALIGN K.V. KELLOGG		ENGRG & ENV ROW & UTIL CONSTRUCT		\$126,864	\$2,332,749			
15	OTTAWA	25092	BR#29 - STEPPS FORD BRIDGE	GUY ENGINEERING	ENGRG & ENV ROW & UTIL CONSTRUCT		\$36,750	\$1,626,000			
16	NOWATA	25424	BR#43 - HANCOCK BRIDGE	GUY ENGINEERING	ENGRG & ENV ROW & UTIL CONSTRUCT			\$111,500	\$2,468,500		
17	MAYES	25417	CHIMNEY ROCK RES RD	GUY ENGINEERING	ENGRG & ENV ROW & UTIL CONSTRUCT			\$223,115	\$1,749,745		
18	PAWNEE	25444	BR#2 - BELFORD BRIDGE	MEHLBURGER BRAWLEY	ROW & UTIL CONSTRUCT			\$101,865	\$7,246,954		
19	CREEK	24681???	40TH WEST AVE W. 61ST STREET CORRIDOR		ROW & UTIL CONSTRUCT			\$750,000			
20	ROGERS	25480	BR#107 & 108 CORRIDOR		ENGRG & ENV ROW & UTIL CONSTRUCT			\$89,790	\$1,846,000		
21	WASHINGTON	25490	W1400 RD & N3980 RD		ENGRG & ENV ROW & UTIL CONSTRUCT			\$323,460	\$2,652,149		
22	CRAIG		BR#65 ELM CREEK		ROW & UTIL CONSTRUCT			\$25,000	\$641,000		
23	MAYES		SOUTH ELLIOTT STREET	WINGFIELD	ROW & UTIL CONSTRUCT			\$100,000	\$100,000		MOVE TO 2011?
24	NOWATA		ROAD 3 - CLOSED BR - SHOEFLY LWC		ROW & UTIL CONSTRUCT			\$10,000			
25	CRAIG				ENGRG & ENV ROW & UTIL CONSTRUCT						
26	CREEK				ENGRG & ENV ROW & UTIL CONSTRUCT						
27	DELAWARE				ENGRG & ENV ROW & UTIL CONSTRUCT						
28	MAYES		BR #15 ROCK CREEK		ENGRG & ENV ROW & UTIL CONSTRUCT						
29	NOWATA		OLD HWY 169 BETWEEN CO RDS 4 & 5, OPOSSUM CREEK		ENGRG & ENV ROW & UTIL CONSTRUCT						
30	OSAGE		PRUE ROAD PHASE 3		ENGRG & ENV ROW & UTIL CONSTRUCT						
31	OTTAWA		CONNORS BRIDGE TO STATE HIGHWAY 137		ENGRG & ENV ROW & UTIL CONSTRUCT						
32	PAWNEE				ENGRG & ENV ROW & UTIL CONSTRUCT						
33	ROGERS				ENGRG & ENV ROW & UTIL CONSTRUCT						
34	TULSA				ENGRG & ENV ROW & UTIL CONSTRUCT						
35	WASHINGTON				ENGRG & ENV ROW & UTIL CONSTRUCT						

CED#1 ARRA & BR FUNDING

J/P	COUNTY	ACTUAL				
		LOW BID	ARRA	BR	CBRI	CBRI
21644	Mayes	\$ 992,147.23	\$ 980,000.00	\$ 59,058.43	\$ 12,147.23	\$ 12,147.23
22754	Mayes	\$ 318,171.28	\$ 290,000.00	\$ 17,805.93	\$ 10,365.35	\$ 10,365.35
20159	Mayes	\$ 334,486.06	\$ -	\$ 268,588.84	\$ 65,897.22	\$ 65,897.22
22055	Pawnee	\$ 314,211.21	\$ -	\$ 266,278.00	\$ 66,570.00	\$ 66,570.00
25031	Tulsa	\$ 1,251,759.85	\$ 900,000.00	\$ 74,786.21	\$ 351,759.85	\$ 351,759.85
22211	Washington	\$ 646,330.74	\$ 636,000.00	\$ 37,779.84	\$ 10,330.74	\$ 10,330.74
23550	Washington	\$ 491,208.01	\$ 480,000.00	\$ 29,472.48	\$ 11,208.01	\$ 11,208.01
23553	Washington	\$ 267,481.13	\$ -	\$ 213,984.90	\$ 53,496.23	\$ 53,496.23
TOTALS		\$ 4,615,795.51	\$ 3,286,000.00	\$ 967,754.63		

\$ 1,102,791.20 Creek/Ottawa/Tulsa BR

\$ 2,070,545.83 Total Obligated

PROJECTED BALANCE \$ 3,286,000.00 \$ 2,535,008.00

LEFTOVER \$ (428,285.00) \$ (464,462.17) TO OSAGE/CANDY CREEK

ETR PROCEDURES

(ASSUMING ETR LOAN TO BE REPAID WITH CBRI FUNDS)

1. County prepares roadway or bridge ETR application.
2. County incorporates project into 5-yr plan. The CBRI portion of the plan may have a negative balance no greater than the amount of the ETR loan.
3. County executes application, revised 5-yr plan and programming resolution at commission meeting.
4. County submits executed application, 5-yr plan, programming resolution and "before" pictures to CED.
5. Upon CED approval, CED forwards the resolution and 5-yr plan to James Pruett and the application and pictures to OCCEDB.
6. James programs the project.
6. OCCEDB forwards a contract to County.
7. County executes contract and returns it to OCCEDB.
8. OCCEDB issues check at its next board meeting.
9. County sets up and deposits ETR funds into a special account under the T2 account to keep these ETR funds from comingling with other funds.
10. Construction may begin. Construction methods must conform to County Roads Design Guidelines, County Bridge Standards or other CED approved standards or methods.
11. County notifies CED of construction completion (within one year of start date).
12. CED inspects project to confirm compliance with appropriate standards.
13. CED takes "after" pictures and forwards pictures to OCCEDB.
14. County submits 324a to James Pruett for reimbursement of ETR loan with CBRI funds.

WASHINGTON COUNTY, DISTRICT 2

excerpt from Linda Herndon's email:

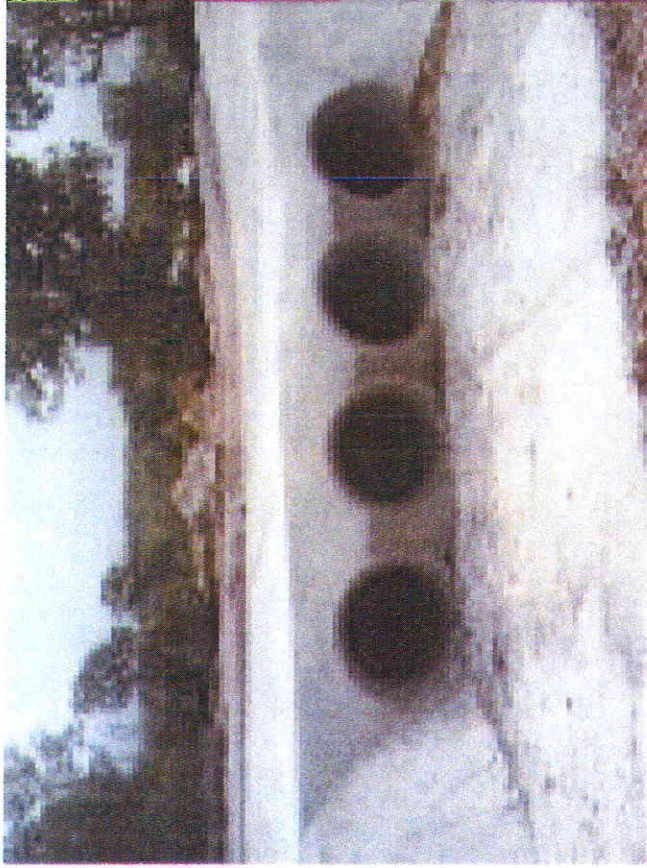
Thought you would like to see these photos of the Prairie Song Road (Durham Rd) Project. It is 5 miles long. We have used a Reclaimer on 3.7 miles and rebuilt the subbase and base, improved the drainage, slightly widened it, and are in the process of contracting a 3" overlay for 3.7 miles of the project and getting it striped. The remainder of the project will be chip and seal. This is a partnership project and when completed will have been funded by the County, \$275,000 from the Cherokee Nation, and \$195,000 from the CBRI Force Account. Also, Rogers County Dist. 2 loaned us a grader and Washington County District 1 and 3 have both helped with manpower and equipment.

Our expected completion date is September 18, 2009 in preparation for the Western Heritage Days Weekend September 19 & 20. A Wild West Show will be hosted by Prairie Song Sept 20. Come join us!





Mayes County, District 3, Wickliffe Creek



CED#1 CALENDAR OF EVENTS

DATE	ITEM OF INTEREST
September 15-17, 2009	CODA Fall Conference, ACCO Board, OCCEDB, & SIG/SIF Mtg
October 1, 2009	BR Funds - County Control Begins
October 1-2, 2009	ACCO Winter Safety Meeting
October 7, 2009	ACCO Board, OCCEDB, & SIG/SIF Mtg
October 16, 2009	Final Plans due to James Pruett for January Letting
November 2-3, 2009	ACCO Fall Conference, ACCO Board, OCCEDB, & SIG/SIF Mtg
November 13, 2009	Final Plans due to James Pruett for February Letting
December 1, 2009	STP - Applications for 2014 Due
December 9, 2009	ACCO Board, OCCEDB, & SIG/SIF Mtg
December 11, 2009	Final Plans due to James Pruett for March Letting
December 31, 2009	BR Funds - County Control Ends
January 1, 2010	BR Funds - ACCO District Control Begins
March 1, 2010	Lake Access Application Deadline
May 30, 2010	BR Funds - ACCO District Control Ends
June 1, 2010	BR Funds - ODOT Control Begins
	Industrial Access Applications may be submitted anytime

Summary of Potential TIGER Grant Projects

County	Project Description	Anticipated Let Date	Miles of	# of Bridges	Jobs During Constr	Long-Term Jobs	Approx Total Cost	TIGER Grant \$	County \$	Partner 1 \$	Partner 1
Craig County, Oklahoma, District 1	BR#78 Paw Paw Creek Bridge	1/1/2010	0.3	1	9		\$1,879,320	\$1,000,000	\$100,000	\$779,320	CIRB
Craig County, Oklahoma, District 1	BR #31 West Fork of Big Cabin Creek	1/1/2010	0.3	1	6		\$1,350,550	\$1,200,550	\$50,000	\$100,000	BR
Craig County, Oklahoma, District 2	BR #50 Big Cabin Creek	12/1/2009	0.6	1	6		\$1,197,256	\$1,047,256	\$50,000	\$100,000	BR
Creek County, Oklahoma, District 1	Overlay of existing on former Historic Route 6	2/1/2010	7	0	11		\$2,100,000	\$2,050,000	\$50,000	\$0	
Creek County, Oklahoma, District 1	Childers Creek	4/1/2010	0.3	1	2		\$459,000	\$409,000	\$50,000	\$0	
Creek County, Oklahoma, District 2	BR #28 Buckeye Creek	12/1/2009	0.3	1	3		\$620,000	\$570,000	\$50,000	\$0	
Creek County, Oklahoma, District 3											
Delaware County, Oklahoma, District 1	Berry Road, NS466 from EW 33.5 north to SH	3/1/2010	4.5	0	7		\$1,350,000	\$1,300,000	\$50,000	\$0	
Delaware County, Oklahoma, District 1	BR #21 Carr Creek	7/1/2010	0.3	1	2		\$381,000	\$331,000	\$50,000	\$0	
Delaware County, Oklahoma, District 2	BR #65 Spavinaw Creek	2/1/2010	0.5	1	8		\$1,522,900	\$1,000,000	\$50,000	\$472,900	CIRB
Delaware County, Oklahoma, District 2	Green Box Road, EW34 (Overlay)	3/1/2010	7		9		\$1,750,000	\$1,700,000	\$50,000	\$0	
Delaware County, Oklahoma, District 2	BR #62 Hog Eye Creek	5/1/2010	0.25	1	3		\$500,000	\$450,000	\$50,000	\$0	
Delaware County, Oklahoma, District 3	New Life Ranch Road, NS467 from old SH33 (3/1/2010	7		9		\$1,750,000	\$1,700,000	\$50,000	\$0	
Delaware County, Oklahoma, District 3	BR #84 Cherokee Creek	4/1/2010	0.3	1	2		\$360,000	\$310,000	\$50,000	\$0	
Mayes County, Oklahoma, District 1	Salt Branch LWC: NEPA is near completion	2/1/2010	0.3	1	3		\$618,000	\$468,000	\$50,000	\$100,000	BR
Mayes County, Oklahoma, District 1	True Road - 6 miles (Overlay)	4/1/2010	6	0	9		\$1,800,000	\$1,750,000	\$50,000	\$0	
Mayes County, Oklahoma, District 1	Higgs Road - 69 Hwy to 28 Hwy - east of Adair	5/1/2010	9	0	14		\$2,700,000	\$2,650,000	\$50,000	\$0	
Mayes County, Oklahoma, District 1	Strang Road from Hwy 69 to Hwy 82 (2 miles i	5/1/2010	2	0	3		\$600,000	\$550,000	\$50,000	\$0	
Mayes County, Oklahoma, District 1	Coal - Strang - 9 miles (Overlay)	6/1/2010	9	0	9		\$1,800,000	\$1,750,000	\$50,000	\$0	
Mayes County, Oklahoma, District 2	Elliott Street - Pryor, OK	11/1/2009	2		10		\$2,000,000	\$1,500,000	\$50,000	\$450,000	CIRB
Mayes County, Oklahoma, District 2	Overlay major collectors. Ex. Chip/seal roads	3/1/2010	41	0	45		\$9,000,000	\$8,950,000	\$50,000	\$0	
Mayes County, Oklahoma, District 2	BR #71 Pryor Creek	6/1/2010	0.3	1	4		\$844,632	\$500,000	\$50,000	\$294,632	CIRB
Mayes County, Oklahoma, District 2	Replace BR #75 - 100' span	11/1/2010	0.3	1	3		\$500,000	\$400,000	\$50,000	\$50,000	BR
Mayes County, Oklahoma, District 3	BR #105(102A) Snake Creek	10/1/2009	0.5	1	3		\$637,243	\$537,243	\$50,000	\$50,000	BR
Mayes County, Oklahoma, District 3	Chimney Rock Reservoir Road, Phase 2	4/1/2010	5	0	8		\$1,500,000	\$1,450,000	\$50,000	\$0	
Nowata, County, Oklahoma, District 1											
Nowata, County, Oklahoma, District 2	BR #29 California Creek	1/1/2010	0.3	1	3		\$615,000	\$545,000	\$20,000	\$50,000	BR
Nowata, County, Oklahoma, District 2	Road EW 2 from NS 405.5 to NS 414 - existin	6/1/2010	9.5		10		\$1,900,000	\$1,850,000	\$50,000	\$0	
Nowata, County, Oklahoma, District 3	BR #28 Unnamed Creek	12/1/2009	0.3	1	4		\$865,073	\$765,073	\$50,000	\$50,000	BR
Nowata, County, Oklahoma, District 3	Old Hwy 169 - 1.5 to 6.5	5/1/2010	5		8		\$1,500,000	\$1,450,000	\$50,000	\$0	
Osage County, Oklahoma, District 1	BR#109 Clear Creek	1/1/2010	0.3	1	5		\$1,000,000	\$900,000	\$50,000	\$50,000	BR
Osage County, Oklahoma, District 1	BR#27&28 Coon Creek	2/1/2010	1	1	6		\$1,200,000	\$1,100,000	\$50,000	\$50,000	BR
Osage County, Oklahoma, District 1	Ramona cutoff, 8.3 miles patching & overlay	4/1/2010	8.3	0	12		\$2,490,000	\$2,440,000	\$50,000	\$0	
Osage County, Oklahoma, District 1	Bull Creek Peninsula - Skiatook Lake Landing	9/1/2010	13	0	20		\$3,900,000	\$3,850,000	\$50,000	\$0	

County	Project Description	Anticipated Let Date	Miles of	# of Bridges	Jobs During Constr	Long-Term Jobs	Approx Total Cost	TIGER Grant \$	County \$	Partner 1 \$	Partner 1
Osage County, Oklahoma, District 2	BR #251 Guesso Creek	1/1/2010	0.5	1	6		\$1,100,978	\$1,000,978	\$50,000	\$50,000	BR
Osage County, Oklahoma, District 2	BR#246 Quapaw Creek	1/1/2010	0.3	1	12		\$1,413,315	\$1,000,000	\$50,000	\$363,315	CIRB
Osage County, Oklahoma, District 2	Oak Street Overlay - from old SH20 east to Lo	8/1/2010	4.3	0	6		\$1,290,000	\$740,000	\$50,000	\$500,000	Osage Nation
Osage County, Oklahoma, District 3	BR #238 Blackburn Bridge	1/1/2010	2.5	1	38		\$7,511,025	\$4,000,000	\$50,000	\$3,461,025	CIRB
Osage County, Oklahoma, District 3	Prue Road Phase 3 from New Prue Road (car	6/1/2010	12	0	18		\$3,600,000	\$3,550,000	\$50,000	\$0	
Ottawa County, Oklahoma, District 1	Umicor Access Road	10/1/2009	1	0	2		\$300,000	\$230,000	\$50,000	\$20,000	Quapaw Nation
Ottawa County, Oklahoma, District 1	Beaver Creek	11/1/2009	0.4	1	2		\$350,000	\$250,000	\$50,000	\$50,000	BR
Ottawa County, Oklahoma, District 2	680 Road - Kansas Line South	3/1/2010	5		8		\$1,500,000	\$1,450,000	\$50,000	\$0	
Ottawa County, Oklahoma, District 3	Littlefield Industrial Park	2/1/2010	2	0	3		\$600,000	\$550,000	\$50,000	\$0	
Pawnee County, Oklahoma, District 1	Pepper Creek	12/1/2009	0.3	1	2		\$300,000	\$200,000	\$50,000	\$50,000	BR
Pawnee County, Oklahoma, District 1	Yale Road - process base and overlay \$300,0	6/1/2010	8	0	12		\$2,400,000	\$2,350,000	\$50,000	\$0	
Pawnee County, Oklahoma, District 1	EW49 from NS347 east to SH18 - south by-pa	8/1/2010	2	0	3		\$600,000	\$550,000	\$50,000	\$0	
Pawnee County, Oklahoma, District 2	Skedee Creek		0.3	1			\$300,000	\$200,000	\$50,000	\$50,000	BR
Pawnee County, Oklahoma, District 2	NS354 - EW44 South to Hwy 64	6/1/2010	6.5		10		\$1,950,000	\$1,900,000	\$50,000	\$0	
Pawnee County, Oklahoma, District 2	EW44 - Skedee East to Blackburn	11/1/2010	6.5		10		\$1,950,000	\$1,900,000	\$50,000	\$0	
Pawnee County, Oklahoma, District 3	Airport Road (Overlay)	6/1/2010	10	0	15		\$3,000,000	\$2,500,000	\$50,000	\$0	
Rogers County, Oklahoma, District 1	BR #79 Dog Creek		0.4	1			\$1,777,572	\$1,677,572	\$50,000	\$50,000	BR
Rogers County, Oklahoma, District 2	N 161st E Ave - Reconstruct and widen to acc		2				\$2,000,000	\$700,000	\$100,000	\$1,200,000	STP
Rogers County, Oklahoma, District 2	E 76th St N (145th to 177th)	5/1/2010	2		3		\$600,000	\$550,000	\$50,000	\$0	
Rogers County, Oklahoma, District 2	Pine Street - Rehabilitate the road with patchin	7/1/2010	9	0	14		\$2,700,000	\$2,650,000	\$50,000	\$0	
Rogers County, Oklahoma, District 3	Lock and Dam 18 Road (Overlay)	3/1/2010	8	0	12		\$2,400,000	\$2,350,000	\$50,000	\$0	
Rogers County, Oklahoma, District 3	BR #96 Panther Creek. NEPA cleared. ROW	3/1/2010	0.3	1	2		\$360,000	\$260,000	\$50,000	\$50,000	BR
Rogers County, Oklahoma, District 3	Old Hwy 33 (Overlay)	3/1/2010	9	0	14		\$2,700,000	\$2,650,000	\$50,000	\$0	
Washington County, Oklahoma, District 1	BR#8 per Brad Manhalter	10/1/2010	0.3	1	3		\$500,000	\$400,000	\$50,000	\$50,000	BR
Washington County, Oklahoma, District 1	BR #2 Unnamed Creek (Trib to Mud): NEPA	11/1/2010	0.3	1	2		\$420,000	\$320,000	\$50,000	\$50,000	BR
Washington County, Oklahoma, District 1	BR#12 per Brad Manhalter	12/1/2010	0.3	1	3		\$500,000	\$400,000	\$50,000	\$50,000	BR
Washington County, Oklahoma, District 2	BR#59 per Brad Manhalter	9/1/2010	0.3	1	3		\$500,000	\$400,000	\$50,000	\$50,000	BR
Washington County, Oklahoma, District 2	BR#105 per Brad Manhalter	10/1/2010	0.3	1	3		\$500,000	\$400,000	\$50,000	\$50,000	BR
Washington County, Oklahoma, District 2	BR #78 Fish Creek: NEPA cleared. Waiting o	10/1/2010	0.3	1	2		\$425,000	\$325,000	\$50,000	\$50,000	BR
Washington County, Oklahoma, District 2	VOM - Improve 4 miles of roadway and 2 bridg	12/1/2010	4	2	51	130	\$10,308,900	\$10,100,000	\$100,000	\$108,900	BR
Washington County, Oklahoma, District 2	W1400 Rd and N3980 Rd	12/1/2010	3	0	15		\$2,975,609	\$2,000,000	\$50,000	\$925,609	CIRB
Washington County, Oklahoma, District 3	BR#95 Keeler Creek	4/1/2011	0.3	1	3		\$600,000	\$500,000	\$50,000	\$50,000	BR
			243.15	34	533	130	\$108,122,373	\$94,526,672	\$3,320,000	\$9,825,701	