

STATE OF KANSAS

CHEROKEE COUNTY

MISSOURI

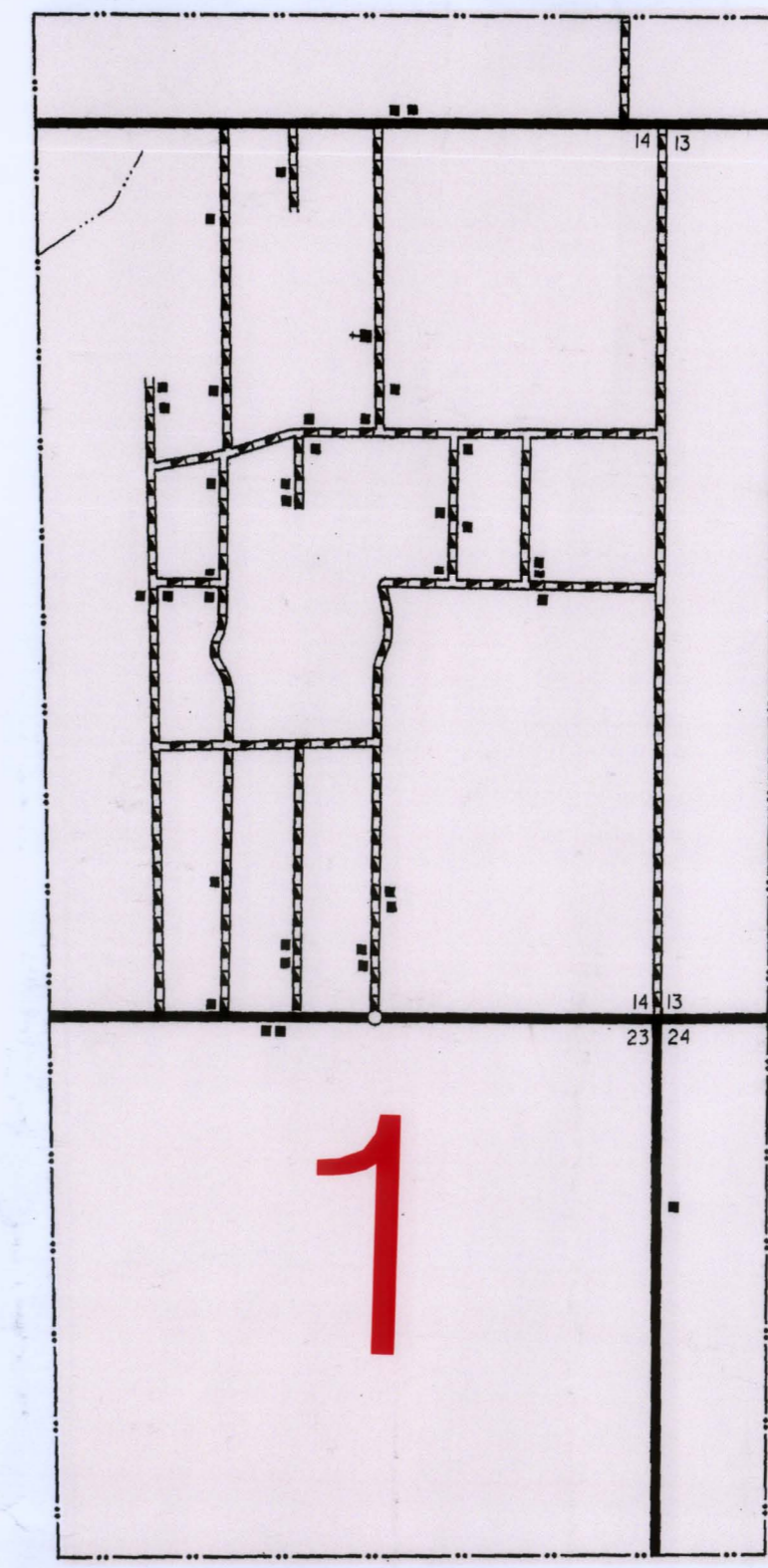
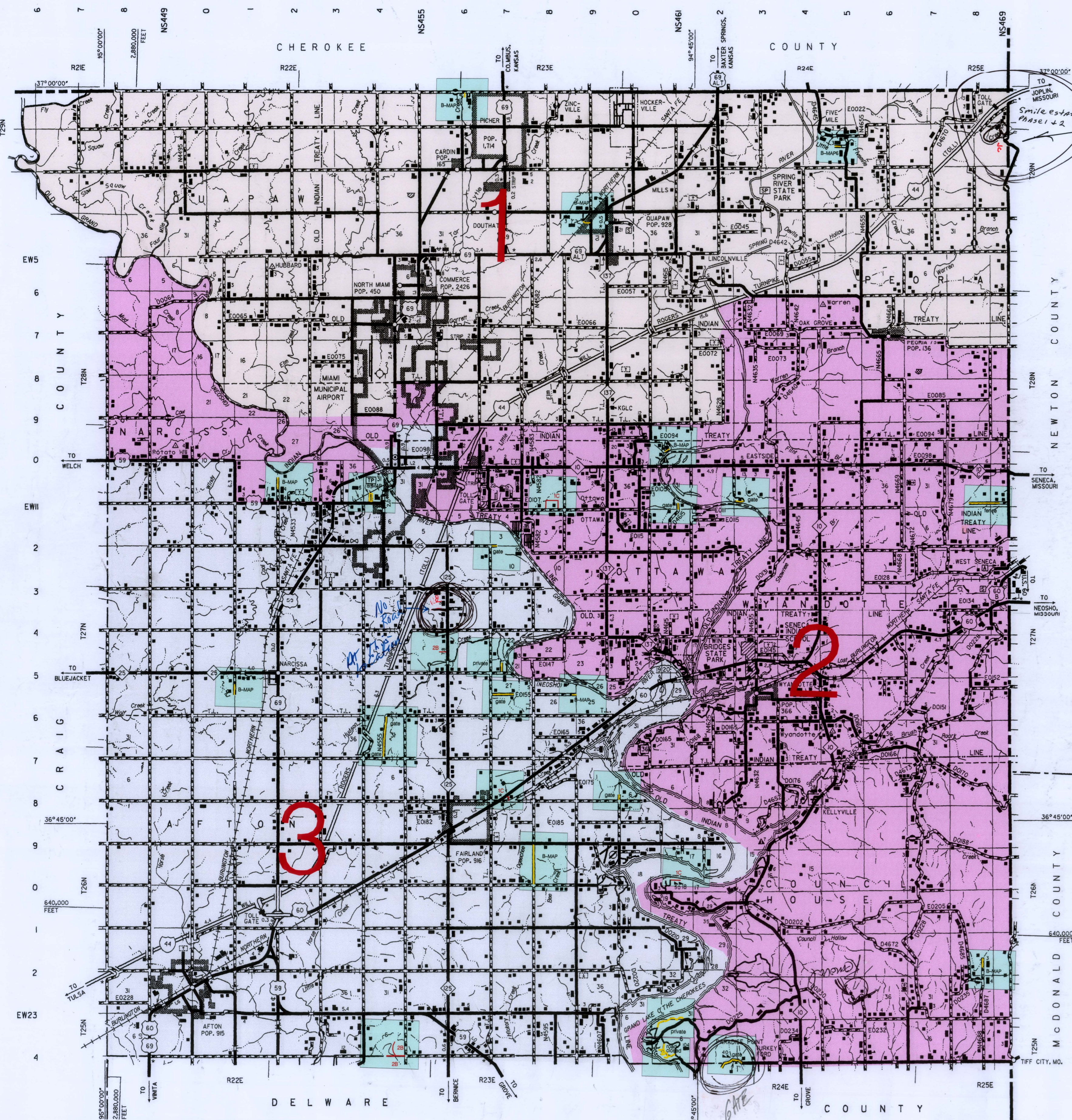
NEWTON COUNTY

MCDONALD COUNTY

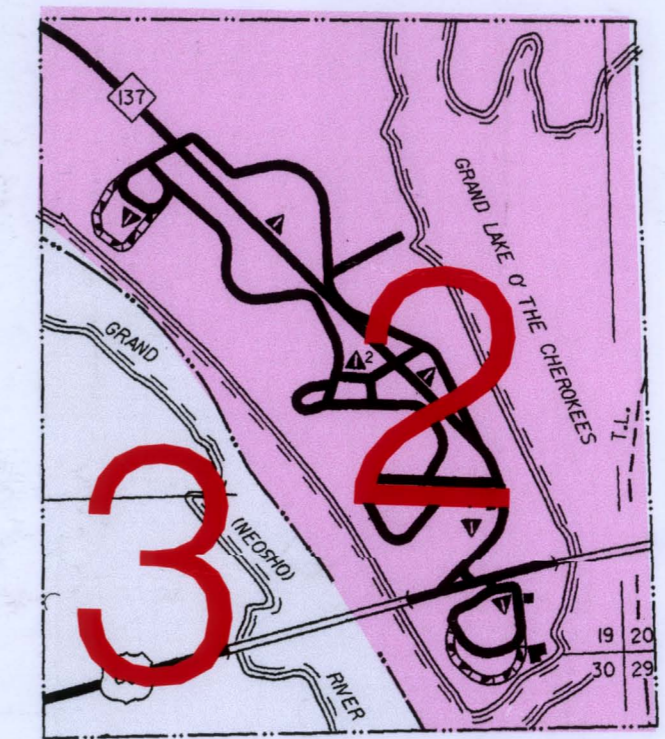
STATE

DELAWARE COUNTY

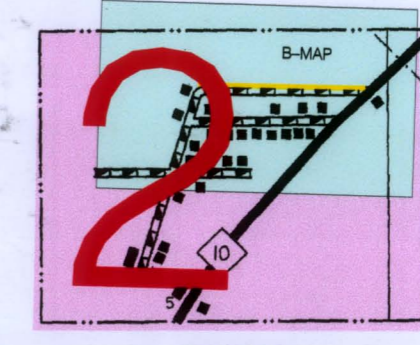
COUNTY



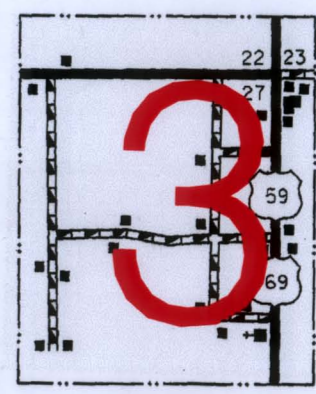
HOCKERVILLE  
SEC. 14, T29N, R22E



TWIN BRIDGES STATE PARK  
SEC. 19, T27N, R24E



KELLYVILLE  
SEC. 3, T26N, R24E



NARCISSA  
SEC. 27, T27N, R22E

Letter sent to Board of County Commissioners on

The Department is in the process of completing an official county road inventory for Ottawa County, and is forwarding each Commissioner a visual map that illustrates the roadway changes that occurred during field inspection. Any roads marked in red indicate new public roads discovered during the inventory that may be eligible for mileage certification, if the county agrees to add roadways to the inventory and no longer meet eligibility requirements for mileage certification. The roads in blue indicate roads the county has filed county action reports with the Department which have been processed into the database for previous years, but have not been drawn on the County Highway Map at this time. All other roadways should have been discussed at previous meetings, and will remain in the department's database as they reside today.

FW, State Senate Bill #346 in 2001 stipulates that streets and roads in municipalities with a population of less than 2,500, and open to the public will be computed into the mileage certification. Municipalities between 2,500 and 5,000 in population that the county has agreed to construct, maintain, or repair will also be computed into the mileage certification. Any roadway in a municipality of more than 5,000 in population is not eligible for mileage certification.

Oklahoma Department of Transportation  
Planning and Research Division  
Revised (03/14/05)

Verification of County Road System

We the undersigned County Commissioners for Ottawa County have reviewed the county road inventory and have found it to accurately describe the county road system at this time. In the event that there are county road additions or deletions to be made at this time certify that the roads marked for addition to the County Road System be indicated by the commissioner initialing next to the road to be added with the definition of a public road by being located on either existing section line right-of-way, public right-of-way through adverse possession or other dedicated right-of-way of record and are open for public travel at all times. These roads would best be described as part of the county road system and are eligible for inclusion in the county's certified road mileage.

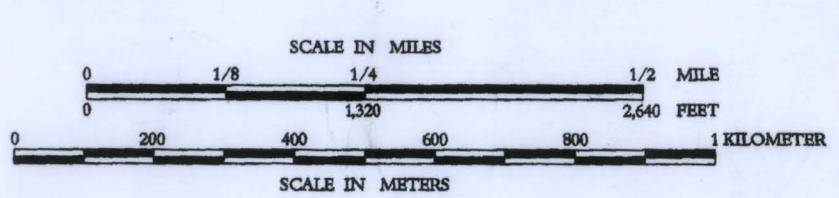
Signed this 8<sup>th</sup> day of 2008  
Month Day Year

*John Clark*  
Commissioner District 1

*Harold Palmer*  
Commissioner District 2

*Russell Conda*  
Commissioner District 3

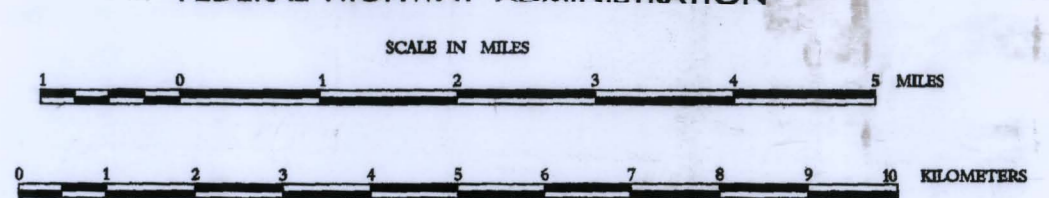
Attest:  
*Rubia A. ...*  
County Clerk



GENERAL HIGHWAY MAP  
**OTTAWA COUNTY**  
OKLAHOMA

PREPARED BY THE  
OKLAHOMA DEPARTMENT OF TRANSPORTATION  
PLANNING DIVISION

IN COOPERATION WITH THE  
U.S. DEPARTMENT OF TRANSPORTATION  
FEDERAL HIGHWAY ADMINISTRATION



LAMBERT CONFORMAL CONIC PROJECTION U.S. & GEODETIC SURVEY DATA  
20,000 FOOT GRID; OKLAHOMA PLANE COORDINATE SYSTEM; NORTH PROJECTION ZONE  
POPULATION FIGURES BASED ON 1990 U.S. CENSUS  
CO. POP. 30561

Copies of this map are available for public use at nominal cost.  
Address:  
OKLAHOMA DEPARTMENT OF TRANSPORTATION  
REPRODUCTION BRANCH Phone (405) 521-2566  
200 N.E. 21st STREET  
OKLAHOMA CITY, OKLAHOMA 73105-3204

This map indicates those roads known to the Department to be open to public travel. Placement of a road on the map has no relationship to maintenance responsibility by any level of government.

ALL DATA CURRENT TO  
DATE OF INVENTORY  
JULY 1997  
ORIGINAL DRAWING BY M.L.B. JANUARY 1998  
STATE SYSTEM REVISED TO JAN. 1998

ALL RIGHTS RESERVED COMPUTER GENERATED

NOT FOR RESALE