

Gary Pogue  
District 1

Dale Vance  
District 2

Office of

**PAWNEE COUNTY COMMISSIONERS**

**PAWNEE COUNTY COURT HOUSE**

500 Harrison Street • Room 203

Pawnee, Oklahoma 74058

(918) 762-3741

FAX 918-762-3714

Dale Carter  
District 3

**RECEIVED**  
FEB 15 2010

GUY ENGINEERING SERVICES, INC.

**RESOLUTION 0910-58**

Be it remembered that on this <sup>1st</sup> ~~29<sup>th</sup>~~ day of <sup>February</sup> ~~January~~, 2010, at a regular meeting of the Board of County Commissioners of Pawnee County, the following resolution was presented, read, and approved:

WHEREAS, the Board of Commissioners has prepared a Five Year Plan for the use of County Bridge and Road Improvement Funds, Federal Bridge Replacement Funds and Surface Transportation Program Funds as required by the Oklahoma Department of Transportation;

NOW THEREFORE BE IT RESOLVED, that the attached plan is the current and approved Five Year Road and Bridge Plan for Pawnee County until modified by this Board.


**BOARD OF COUNTY COMMISSIONERS  
PAWNEE COUNTY, OKLAHOMA**

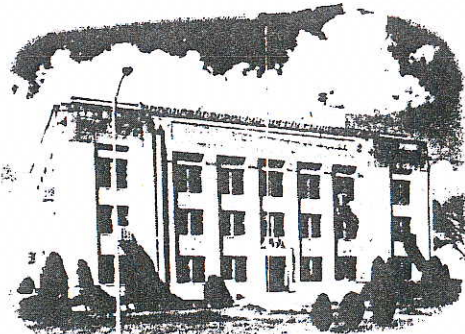
  
Dale Vance, Chairman

  
Dale Carter, Vice Chairman

  
Gary Pogue, Member

ATTEST:

  
Marcellee Welch, County Clerk  
2-1-10



**PAWNEE 5- YEAR PLAN**

Updated 1-20-2010 by Kandy

Dist Year	J/P#	Project	Project#	Phase	Engineer's Estimate	2010					2011					2012					2013					2014					OUT YEARS				
						CBRI	BR	HB1176	STP	Other	CBRI	BR	HB1176	STP	Other	CBRI	BR	HB1176	STP	Other	CBRI	BR	HB1176	STP	Other	CBRI	BR	HB1176	STP	Other	CBRI	BR	HB1176	STP	Other
						Unencumbered Balance	Yearly Accumulation	Total Funds Available																											
2	23133	BRO-159D(056)CO N347E43.3 Skedee Creek	NBI 04444	Eng/Env ROW/Util Constr Insp Construction	N/A \$ 10,000 \$ 20,252 \$ 337,537	\$ 660,700 \$ 220,000 \$ 880,700	\$ - \$ 224,500 \$ 224,500	\$ - \$ 8,626,000 \$ 8,626,000	\$ - \$ - \$ -	\$ - \$ - \$ -																									
2	22154	E44N355.3, .25S & 2.0 E of Skedee CN37	NBI 03211	Eng/Env ROW/Util Constr Insp Construction	N/A N/A N/A \$ 25,000																														
2	23480	BRO-157D(083)CO BLACKBURN BRIDGE CN238	NBI 02166	Eng/Env ROW/Util Constr Insp Construction	N/A \$ 40,000 \$ 486,000 \$ 8,100,000																														
1	23134	BRF-159C(057)CO N348E49.4 Pepper Creek	NBI 09059	Eng/Env ROW/Util Constr Insp Construction	N/A \$ 10,000 \$ 18,000 \$ 300,000																														
1	24721	BRO-159D(084)CO UNNAMED CREEK CN131	NBI 02422	Eng/Env ROW/Util Constr Insp Construction	N/A \$ 10,000 \$ 20,400 \$ 340,000																														
2	25444	CIRB BELFORD BR. OVER ARKANSAS RIVER CN2	NBI 01417	Eng/Env ROW/Util Constr Insp Construction	N/A \$ 14,000 \$ 87,865 \$ 9,000,000																														
1	23259	BRO-159D(063)CO LAGOON CREEK	NBI 06500	Eng/Env ROW/Util Constr Insp Construction	N/A \$ 10,000 \$ 30,000 \$ 600,000																														
1	2014	N358E48.4, 2.0E & 3.9S OF BLACKBURN CN76	NBI 04007	Eng/Env ROW/Util Constr Insp Construction	\$ 49,000 \$ 15,000 \$ 45,000 \$ 750,000																														
2	24375	CB-159C(081)CO CRYSTAL CREEK CN35	NBI 07398	Eng/Env ROW/Util Constr Insp Construction	N/A \$ 15,000 \$ 54,000 \$ 900,000																														
2	21557	BRO-159D(049)CO COAL CREEK CN22	NBI 21557	Eng/Env ROW/Util Constr Insp Construction	N/A \$ 10,000 \$ 24,600 \$ 510,000																														
3	2015	BRO-159X(XXX)CO HOUSE CREEK CN148	NBI	Eng/Env ROW/Util Constr Insp Construction	\$ 80,000 \$ 10,000 \$ 57,000 \$ 1,000,000																														
1	2015	BRO-159X(XXX)CO UNNAMED CREEK CN85	NBI 05331	Eng/Env ROW/Util Constr Insp Construction	\$ 36,000 \$ 10,000 \$ 28,500 \$ 475,000																														
2	24657	BRO-159D(062)CO CN39	NBI 21251	Eng/Env ROW/Util Constr Insp Construction	N/A \$ 10,000 \$ 24,000 \$ 450,200																														
1	2015	BRO-159X(XXX)CO CN89	NBI 04189	Eng/Env ROW/Util Constr Insp Construction	\$ 40,000 \$ 5,000 \$ 31,500 \$ 525,000																														
2	2015	BRO-159X(XXX)CO HARPER CREEK CN48	NBI 03863	Eng/Env ROW/Util Constr Insp Construction	\$ 36,000 \$ 10,000 \$ 28,500 \$ 475,000																														
Total Expenditures						\$ 178,289	\$ 224,500	\$ 8,626,000	\$ -	\$ -	\$ 180,000	\$ 197,000	\$ 14,000	\$ -	\$ -	\$ 145,900	\$ 224,500	\$ -	\$ -	\$ -	\$ 448,000	\$ 197,000	\$ 9,087,865	\$ -	\$ -	\$ 585,500	\$ 224,500	\$ -	\$ -	\$ -	\$ 4,386,300	\$ 197,000	\$ -	\$ -	\$ -
Ending Balance						\$ 702,411	\$ -	\$ -	\$ -	\$ -	\$ 742,411	\$ -	\$ -	\$ -	\$ -	\$ 816,511	\$ -	\$ -	\$ -	\$ -	\$ 1,036,511	\$ 197,000	\$ 9,087,865	\$ -	\$ -	\$ 808,511	\$ 224,500	\$ -	\$ -	\$ -	\$ 223,011	\$ 197,000	\$ -	\$ -	\$ -

APPROVED IN REGULAR SESSION THIS 1st DAY OF Feb, 2010.

*[Signature]*  
CHAIRMAN

*[Signature]*  
COMMISSIONER

*[Signature]*  
COMMISSIONER

ATTEST: *[Signature]*  
COUNTY CLERK



Negative dollar amounts are shortfalls which must be obtained from other funding sources.